

completing a *dream*  
a pathway forward



emmanuel

# completing a *dream*

## a pathway forward

**Before you is a dream**, a dream that was first brought into fruition thirty years ago and continues today. Three decades ago, a few families built a cinder block building on an orchard property at the edge of town...

...Families called together with a common mission and clear objectives. The goal was to see a church planted that would reach local children and families. It would be committed to the community's spiritual and physical needs. It would share the gospel in Westbank and abroad. With a focus on the Holy Spirit's power to change lives, together they started to lay a foundation that others would build upon. The ministry complex would change with time, needs and community dynamics.

**Now is the time** to consider completing the dream.

Today we begin a process of discussion, prayer and consultation. Emmanuel's leadership team feels it is time to examine the completion of the ministry centre God has allowed us to inherit. This would include a theatre / sanctuary and paving the parking lot. As we have celebrated our 30th anniversary, renovated and dedicated our new gymnasium, we see there are more opportunities before us. Never before has Emmanuel had the need, the size or the finances to actually complete the dream that was first envisioned. Now is the time. Let's walk this pathway of discovery together.



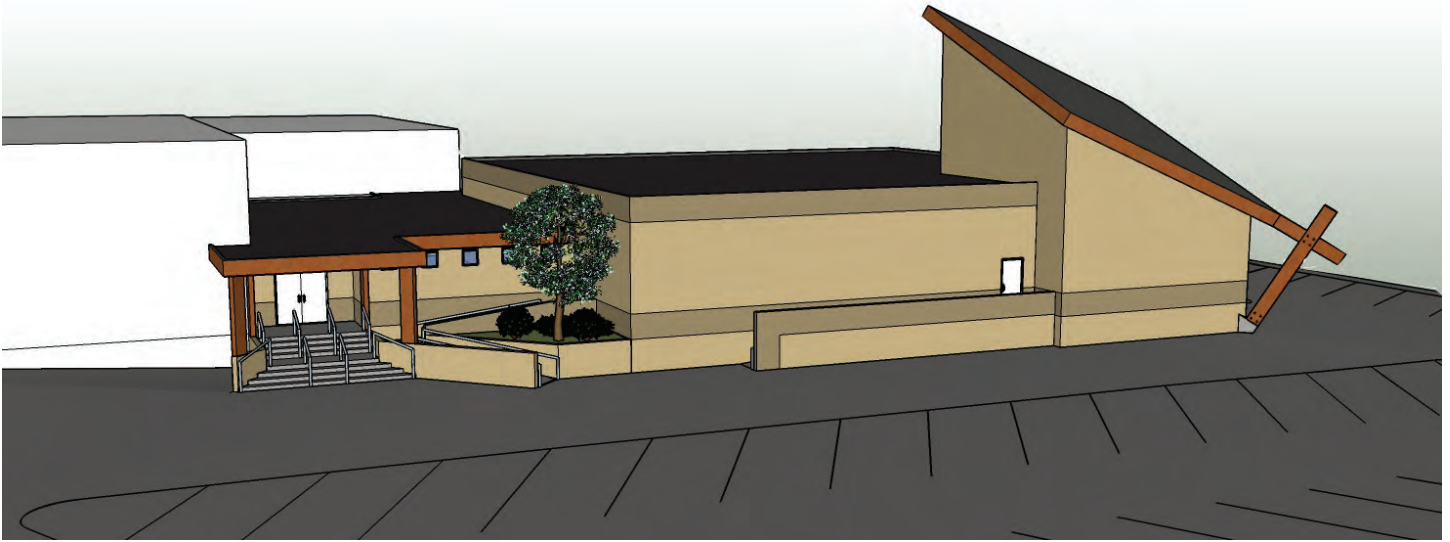
### the idea

The goal is to inform, pray and discuss our options prior to a congregational vote to be held on Sunday, November 14.

**Inform:** The folder you hold in your hand along with the congregational dinner on Sunday, September 26th is the start. In addition to this, we invite you to a "fireside chat" on October 17. Our deacons have also made themselves available to any family that would appreciate a personal time of discussion. As always, our pastors are available throughout the week to answer questions and clarify our opportunities.

**Pray:** We are asking you to make this matter a part of your personal prayers. It will be placed on the calendar for our fasting and prayer team for October and November. In addition, we will be having special prayer meetings to seek God's guidance.

**Discuss:** In a desire to hear from all members and adherents who are a part of Emmanuel, we are placing a plebiscite before you (attached). Please take time to consider the questions. We would like to hear back from you prior to the November meeting. Therefore, we are setting the plebiscite deadline as Sunday, October 31. The plebiscite will not be binding, it will simply measure the level of support, both for the idea of expansion as well as the financial commitment. This data will be made available at the Congregational Meeting.

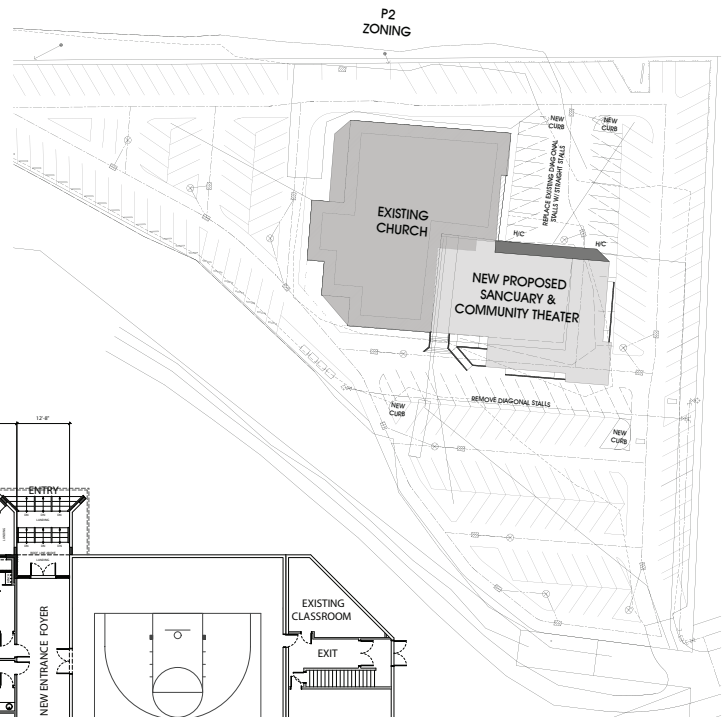
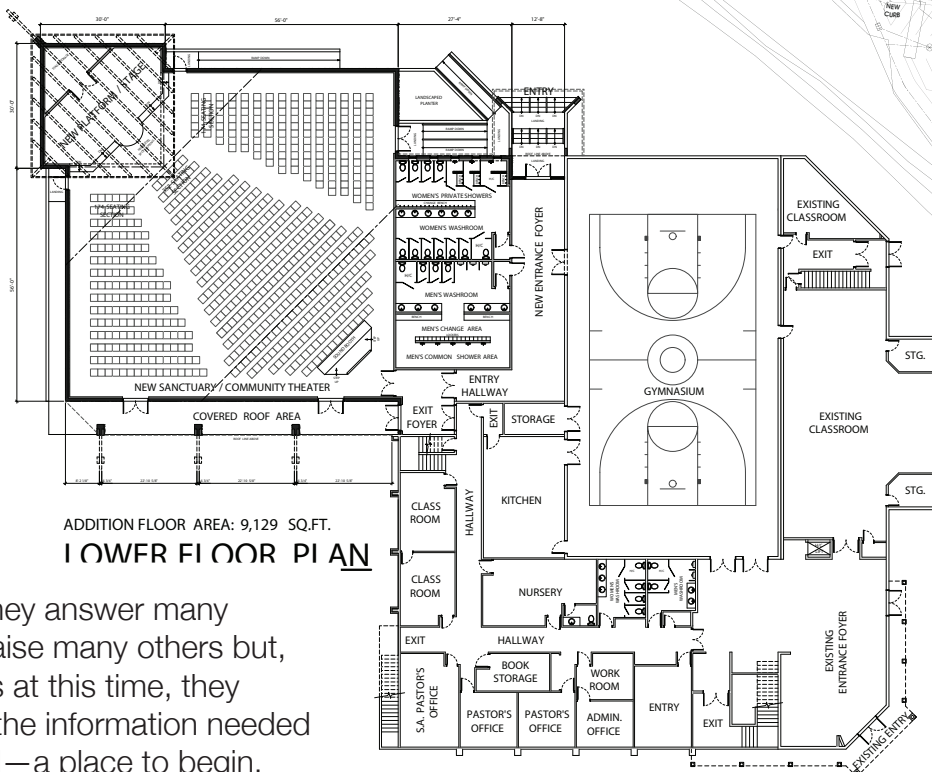


## what are the possibilities?

The preliminary drawings presented here were developed this summer. We simply asked an architect to help us begin exploring opportunities.

Our goals were to answer basic feasibility questions. Where could we put a sanctuary? How much space would it take up, how many seats would be available, how many parking stalls would we lose and how much would it cost?

We wanted a simple, multi-purpose structure that would accommodate at least 700 people and not take away any parking spaces. We see these plans as a place to start a conversation. They answer many questions and raise many others but, for our purposes at this time, they provide us with the information needed to move forward—a place to begin.



**Top:** possible new theatre/sanctuary entry.

**Above:** possible expansion and paving plan.

**Left:** preliminary floor plan of the existing space plus expansion.

## preliminary plan highlights

- New 700 seat theatre/sanctuary will be situated on existing playground area (Kelowna Community Theatre is 800 seats)
- Paving, drains and lighting in parking lot
- Theatre/sanctuary space and gymnasium/classroom space can be completely closed off from each other—important for rentals and community events
- New washroom and shower facilities for gymnasium
- New entry foyer for theatre/sanctuary
- No modifications needed for existing structure
- No loss of parking spaces

## potential financial implications

The paving and building expansion project is expected to cost approximately \$2.9 million. To complete the project, we would be asking the 200 families of Emmanuel Church to make a five year commitment to the legacy project.

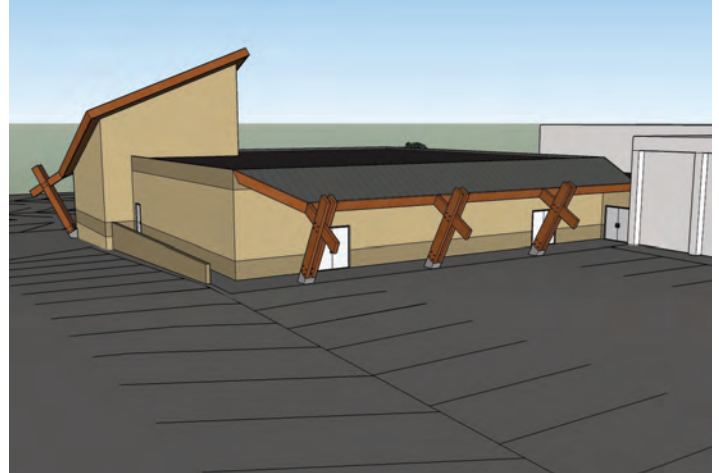
Year	Fund-raising amount
Year 1 - 2011	\$362,000 (min; 12.5% of total)
Year 2 - 2012	\$362,000 (min; 12.5% of total)
Year 3 - 2013	\$362,000 (construction year)
Year 4 - 2014	\$362,000
Year 5 - 2015	\$362,000
<b>Five year total</b>	<b>\$1,810,000</b>

**Remaining budget:** \$1,090,000 would be carried on a new mortgage. We consider this a reasonable amount for 200 families and a church grossing over one million dollars a year in revenue.

## your input

We value your input and understand that nothing moves forward without the strong support of our church body.

Please take a few moments to fill out the attached feedback form and return it to the church office by Sunday, October 31.



**Top:** Preliminary rendering of the proposed addition from near the current highway sign.

**Above:** Current view of the same location.

**Below:** Aerial view showing existing structure plus the proposed addition.

