

building update

OCTOBER 2011



Autumn Greetings!

This communiqué has been put together in order to keep you informed about our journey together to build an auditorium. I wanted to bring you an update from our Design Team as well as cast a vision forward about where we are going.

Almost a year ago, we decided to go on a journey together. We embarked on a road to plan, raise money and move forward with the concept of paving and building a multipurpose auditorium for our church and Okanagan community. We received pledges from our church families. We held a number of "open houses" to solicit ideas, priorities and to build a team. From that a "design team" was created to get the ball rolling. This team has secured an architect and has been wrestling with the various ideas, concepts and priorities. The Leadership team, along with the Design team, met with our BC & Yukon District Superintendent of the PAOC, who had recently built a large facility in Surrey with a very similar congregation size. All these things have been working together to get us to the point we are at today.

In this communiqué you will receive an update from the Design Team. Much of this information was shared at the Dinner & Unveiling on Sunday, September 25th. We want to communicate well. We want to continue to dream together for a preferred future of ministry and outreach. I hope this is helpful for you to understand where we are at and what the next steps are.

Now that we have met to unveil the design of the new room, we have set our next meeting for Sunday, October 23rd. It will include the expected costs and the various ways to move forward in fundraising. I know you'll want to be a part of that, please mark it on your calendar. After the next meeting we will give time for reflection and it will lead us to a congregational meeting in November. That will be one year from the time the original vote was taken. That meeting will allow the membership to make final decisions about funding and the pathway forward. All financial decision will be made by the membership.

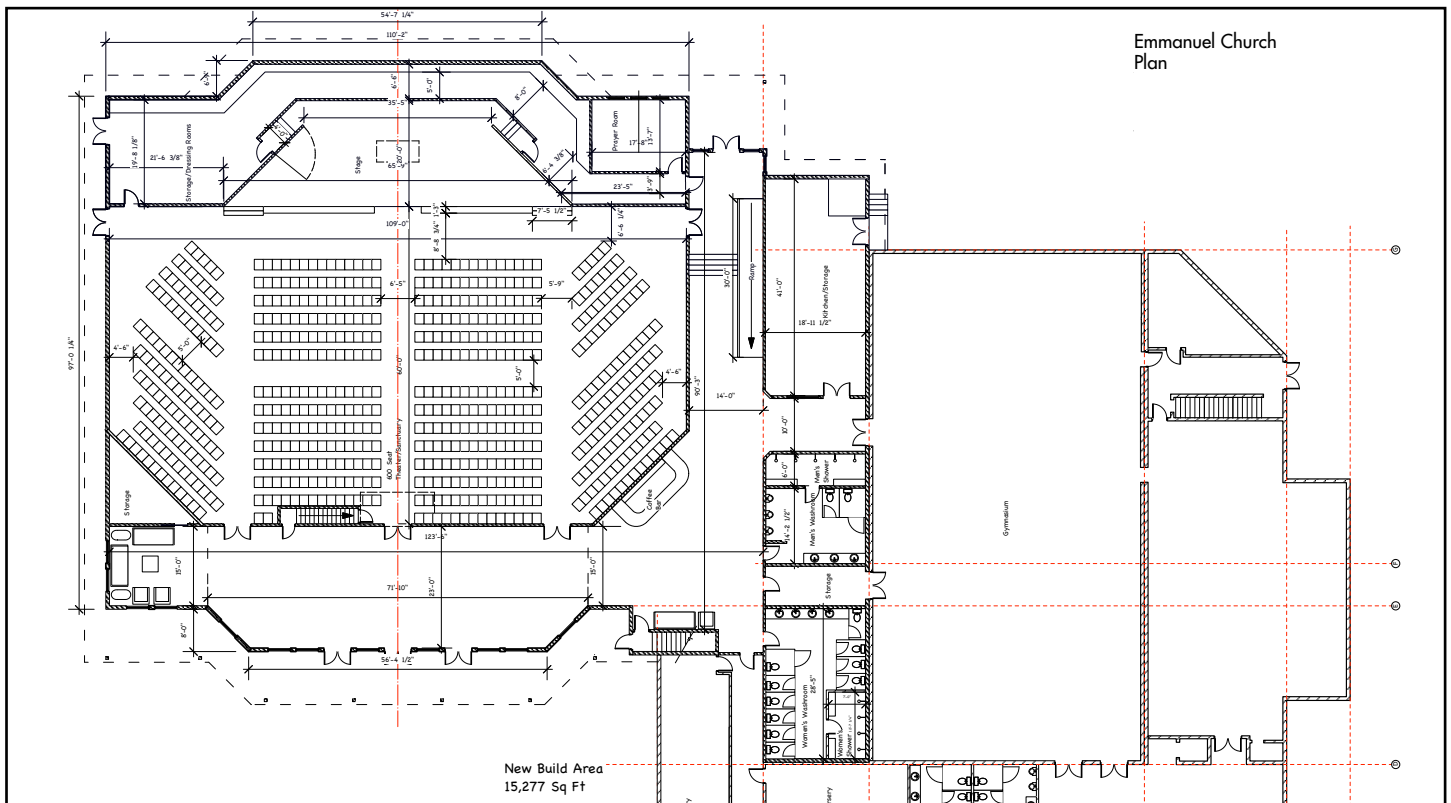
In the mean time, can I ask you to pray about this? Pray for the leadership of our church and for good decisions to be made

all along the way. Pray about what God would have you do. Pray for our current efforts to raise money for research and architecture costs. Be a part of this adventure. This fall, as God enables, give an offering to the Building Fund. Please do not take tithes away from the General Fund. But participate in helping us get ready for those important meeting this fall. Your prayer, ideas and financial contribution will do that.

Emmanuel is a family on a mission. Locally, in Canada and around the world we are working to leverage our influence in order to proclaim the Gospel of Jesus Christ in both word and deed. As indicated through our fall theme, we are about releasing people in their mission. We are about building something for "ourselves" as well as for "others". We walk a tension of doing ministry "now" as well as planning for the "future".

Thank you for your prayers and partnership,

Pastor Derrick



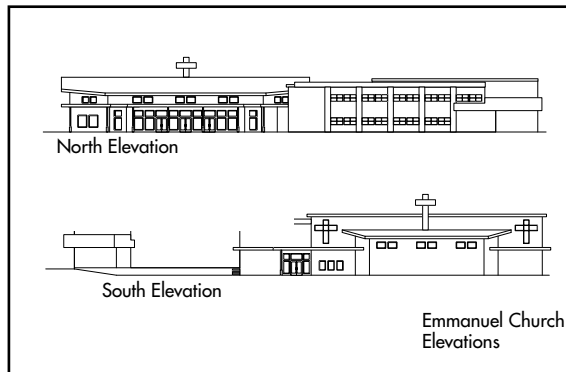
Design Team Update

Since April, Emmanuel's Design Committee has been meeting frequently to continue exploring options for the new addition.

- It has been determined that the original drawing representing 9,129 square feet is definitely too small.
- Kathleen Morrison has been engaged at \$60/hour to make all of the preliminary drawings and the reiterations of the same. We expect that we are saving about 50% on the cost of making these drawings as the going rate for an Architect is \$120.
- An Architect has indicated that he is willing to take the drawings made by Kathleen Morrison, turn them into the final drawings and to affix his seal on them.
- The preferred drawing shows the building sitting with its front facing Highway 97 and with the floor sloping down and away from the front to the stage. Any other orientation proved to be too difficult due to the natural grade of the property.
- The drawing shows 600 seats. If we exceed 600 seats, the requirement for washrooms increases.

Features of proposed building

- The Committee has agreed that the following features are desirable;
- Foyer large enough to allow us to use it as a coffee bar/gathering place
- Washrooms include showers
- Washrooms located for access from the gym or the auditorium
- Kitchen relocated to allow it to service Auditorium and Gymnasium
- Room for a small walk-in cooler in the kitchen if desired
- Center aisle plan
- Sound & media stage above the door on the center aisle, inside the auditorium
- Sloped floor at 1 foot / 20 feet
- Interlocking stationary chairs to be used
- Layout keeps the distance from stage to back of room as short as possible
- An aisle running laterally across the room to improve movement at greeting time
- Prayer room on one side of the stage with access to stage
- Storage room on the other side of the stage with access to stage
- The stage to be 18" high with a kneeling platform across the width and at least 2 sets of steps to access the stage
- A minimum of 8 feet between the front seats and the stage
- Baptismal to be located on stage



building a vision

1. A place to worship
On Sunday mornings and other times during the week, the building is a place to worship God.
2. A place to gather
In times of celebration and mourning, the building is a place to gather for our church body and the community.
3. A place to bless the community
We believe in tangibly serving others the way Jesus taught us to do.
4. A legacy to pass on
Emmanuel inherited a \$6 million building and grew from 50 people to 500. How can we leverage this for the ministry of future generations?
5. A fulfillment of what God gave to people four decades ago
The original intention for our property was to first build a gym, then build an auditorium. We're completing the dream.

next step

Join us on **Sunday, October 23** for an open meeting discussing funding options.

design team

David Shaw	John Staring
Steve Johnston	Dean Larson
Nancy Beselt	Doyle Sam